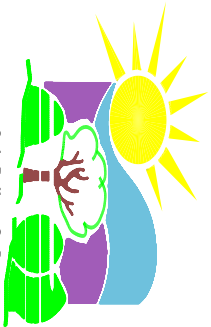


COLUMBIA PARK EAST



CITY OF
KENNEWICK
WASHINGTON

COLUMBIA RIVER

RIVER FRONT (WEST)
11 ACRES

RIVER FRONT (EAST)
6 ACRES

MULTI USE FIELDS
20 ACRES

MEMORIAL (WEST)
3 ACRES

MEMORIAL (EAST)
3 ACRES

FAMILY ACTIVITIES
32 ACRES

BAND SHELL
16 ACRES

FISHING POND (EAST)
8 ACRES

LEGEND

- RENTAL AREAS
- SHARED AREA
- NO RENTAL

